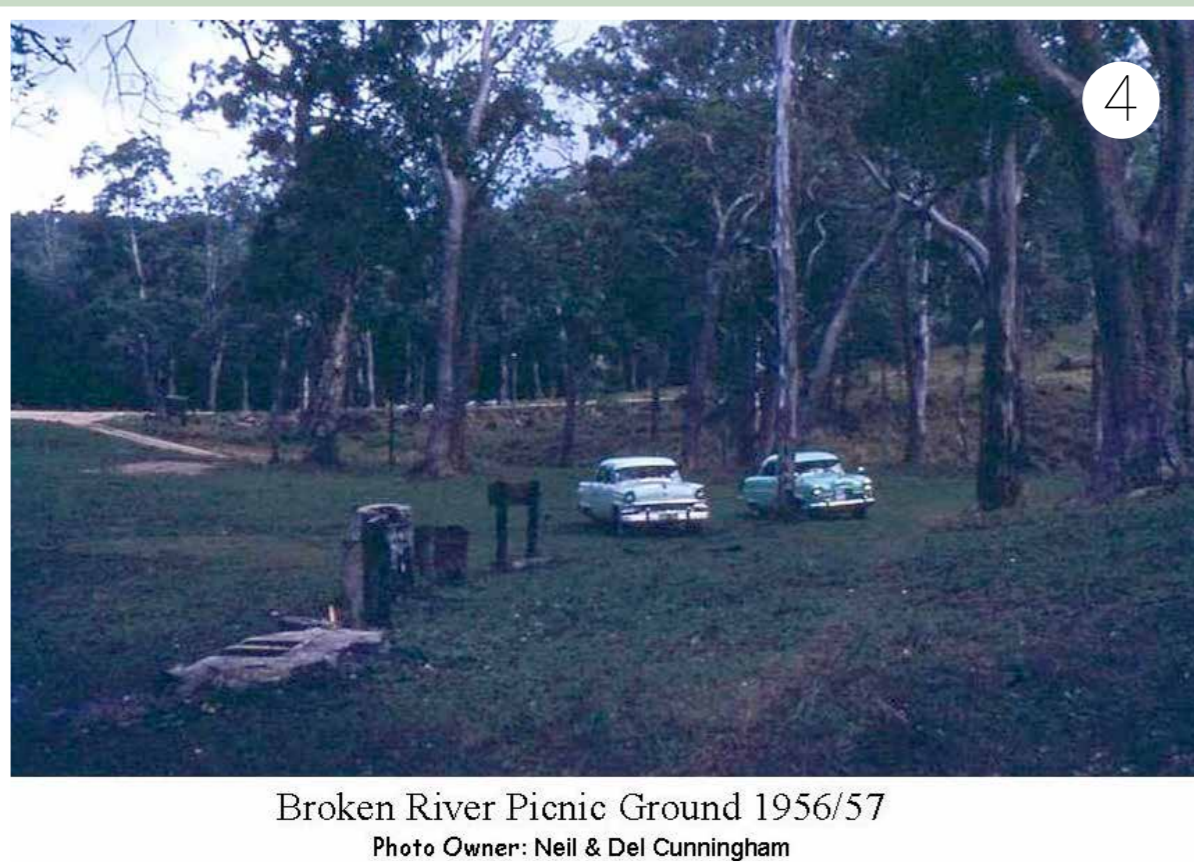
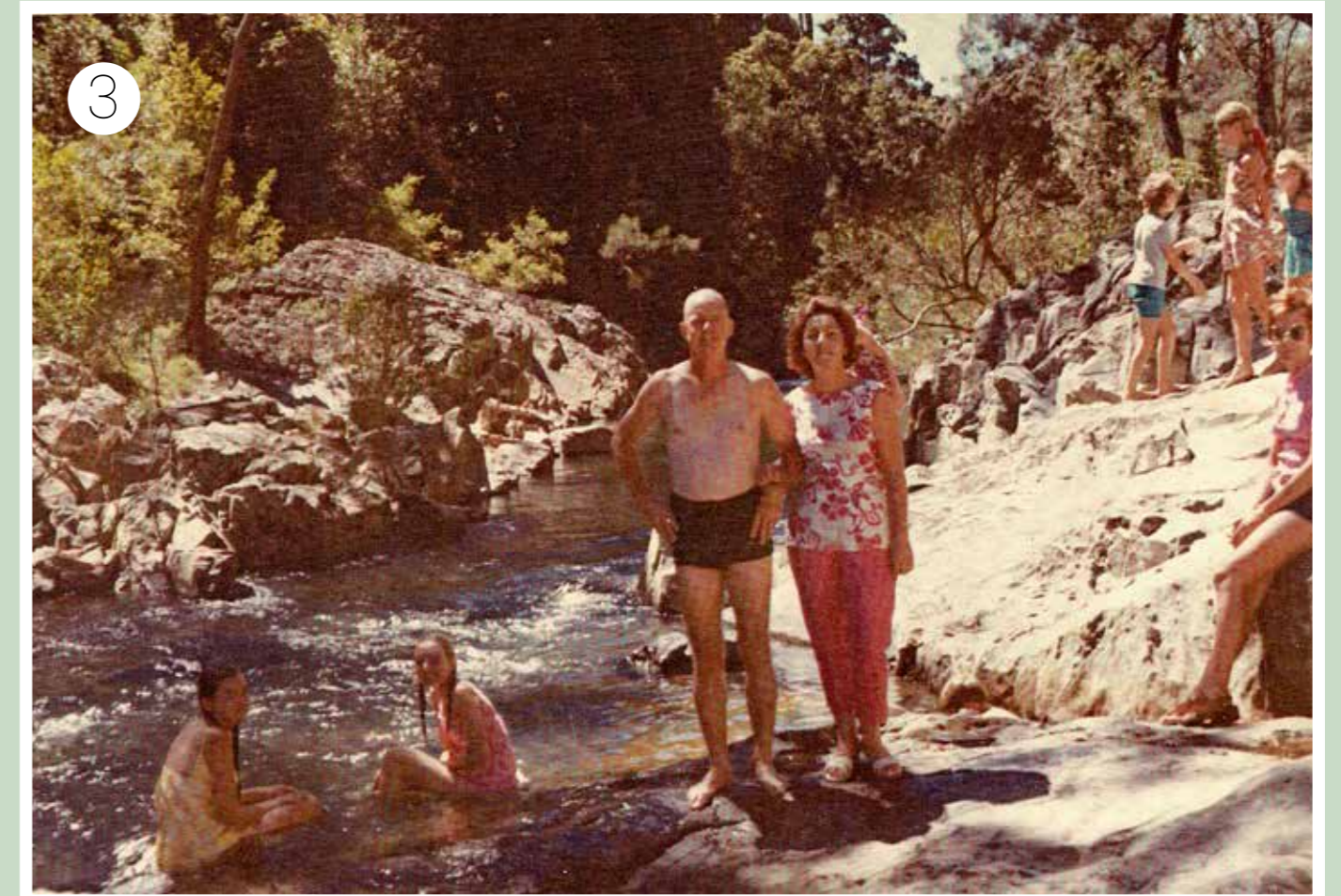
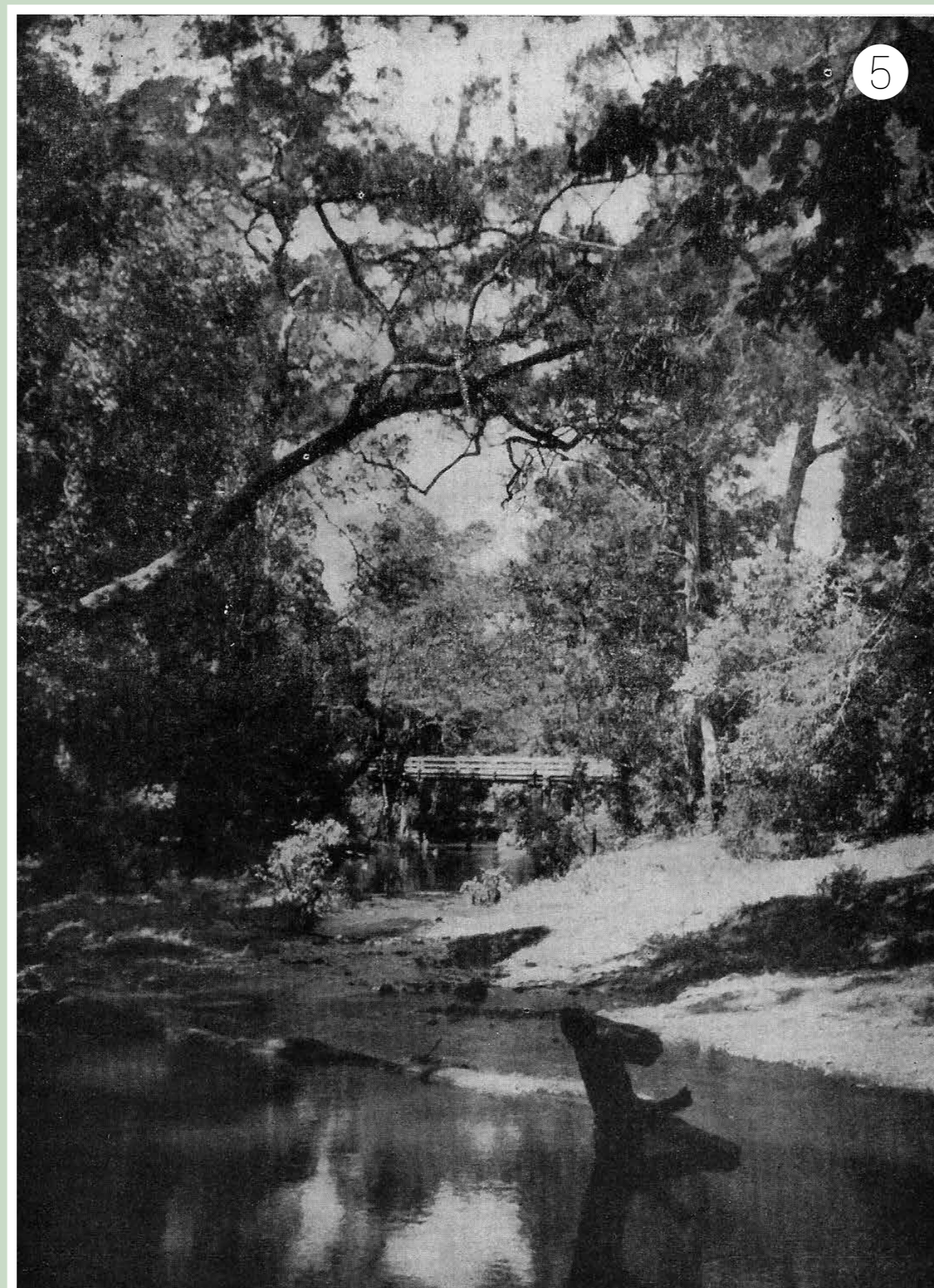


# TOURISM AT BROKEN RIVER



Broken River Picnic Ground 1956/57  
Photo Owner: Neil & Del Cunningham



## IMAGE DESCRIPTIONS:

1. 1930s - 40s Broken River swimming hole
2. 1934 Broken River Bridge featuring Mrs AB Swayne and friend
3. 1971 Cedric Swayne family at the swimming hole
4. 1956/57 Cars at the Broken River picnic grounds
5. 1930s Broken River bridge, pg 104 from Mackay-Blair Athol Illustrated
6. 1986 Daily Mercury Mackay article on "Broken River Holiday Cabins"

In 1936 the Broken River picnic area that we know today was gazetted as a rest area, as P.E.I. workers building the road from Eungella to Crediton were using it as a camp-site and place to rest.

During World War II, Broken River became a popular place for US soldiers to visit on recreation leave from Mackay. Astoundingly, by 1949 there was an average of 400 people visiting the park each month - a considerable number given that it would most likely have taken 3-4 hours travel time from Mackay.

1966 saw the road to the Broken River picnic area graded and two years later, dressing sheds were constructed to service the very popular swimming hole. Over the coming years, more and more people would visit Broken River to camp, swim and relax at.

The Burns family built Broken River Mountain Resort on land adjacent to the river in 1986 - they saw it as a comfortable alternative to camping. Initially it was four self-contained cabins built along the riverside, but the destination grew with popularity and today it stands at 18 cabins.

In 1989, the platypus viewing platform construction had finished along with a Kiosk and Visitor Information Centre. Things seemed to be charging ahead for this popular tourist spot, but then Cyclone Aivu hit Eungella and the Clarke Range took a beating.

The Clarke Range road was damaged severely. Traffic was limited to short morning and afternoon clearance for locals and tourism took a dive for almost a year whilst the Range was repaired.

In the mid 2000s toilets were removed, and the Broken River camping area was considerably reduced in size, in order to combat erosion and discourage over-use of the area. Around 2006, Fern Flat campsite was established as a walk-in camp area for visitors.

Today, Broken River is still the most reliable place you can spot a platypus in the wild and every year, thousands of people travel there to experience nature at its most pristine.

## Step Back in Time

*gathering Eungella's past*

Images were contributed to the "Step Back in Time - Gathering Eungella's past" project by past and present residents.

Visit [www.history.eungella.com.au](http://www.history.eungella.com.au) for more information.